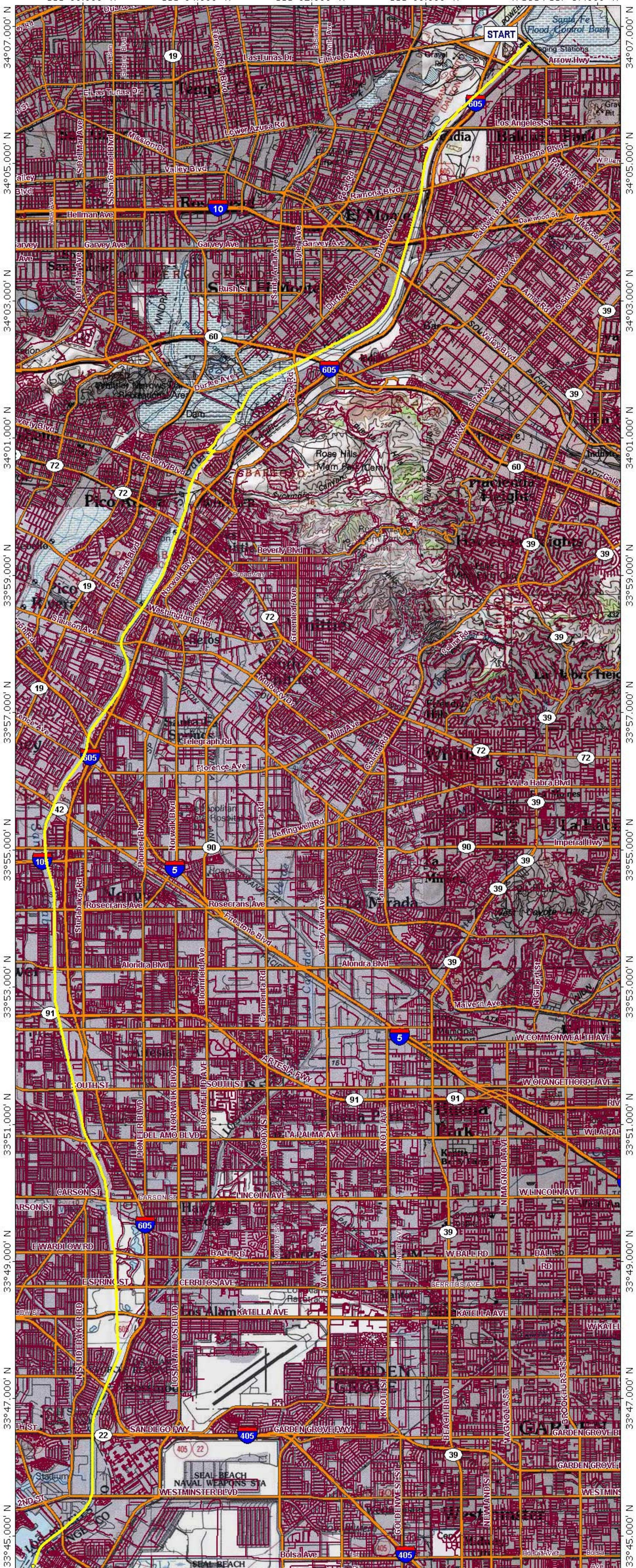
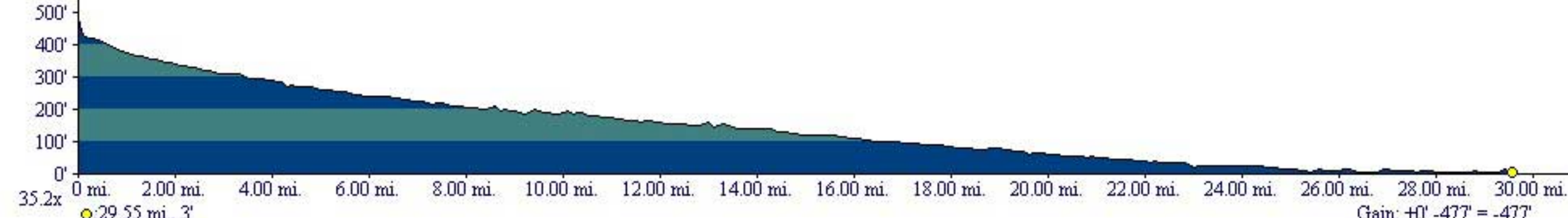


# San Gabriel River from Santa Fe Dam

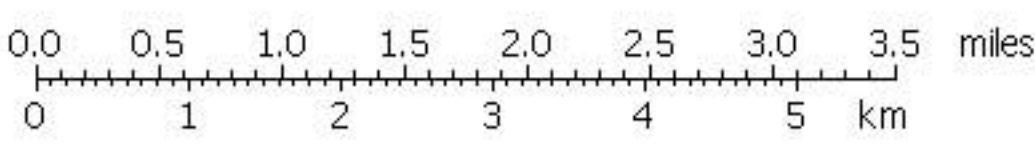
118°06.000' W    118°04.000' W    118°02.000' W    118°00.000' W    WGS84 117°57.000' W



Map created with TOPOLOG © 2008 National Geographic; © 2007 Tele Atlas, Rel. 17/2007



Gain: +0' -477'



TN MN 13°

09/11/08